



## Fall/Winter Newsletter

### Contents

Update Report	1
Challenges and Successes	3
Facilities Update	7
Passages	8
DBG Master Naturalist Program	9
Volunteer Update	10
Horticultural Happenings	11

*Our roots are in the sands of coastal Delmarva*

*December 21, 2020*

## Update Report

President Ray Sander & Executive Director Sheryl Swed

**COVID-19, Virtual, Resilience** – These have become the watchwords at the Delaware Botanic Gardens as we complete 2020 and begin 2021. When we planned for 2020, we envisioned a full schedule of programs, introducing new features at the Gardens and highlighting the skills of our great volunteers and our newest staff member, Brian Trader, who had joined DBG in August 2019. Then, the coronavirus hit Delaware.

**COVID-19** – The virus and the resulting pandemic guidelines significantly shortened our season by 19 weeks. Special events in the Folly Garden and the Outdoor Learning Garden were cancelled. Our annual Fundraising Dinner had to be cancelled and later reimagined as a **Virtual** Dinner with great help from SoDel Concepts.

**Virtual** – Thanks to the Internet, **Virtual** became the way to bridge the separation required by **COVID-19**. Our Board, Executive Committee, and many staff meetings were conducted using Internet videoconferencing technology.

These **Virtual** sessions enabled DBG leadership to continue to interactively manage and direct the operations of the Gardens. Our dedicated Staff and committed Volunteers continued to find ways to work safely and to maintain social distancing while they maintained and expanded the gardens. All the DBG **Virtual** connections were made possible by the expertise of our technology guru, Tom Bason. As Director of Technology, one of Tom's most important contributions was the reservation and payment system, which enabled our docents to welcome visitors with minimal face-to-face interaction. The timed reservations ensured that visitors would arrive throughout the open hours and not congregate in large groups. These **Virtual** steps empowered us to open to visitors and still maintain a high level of safety for our guests, staff and volunteers.



Ray Sander and Sheryl Swed

The **Virtual** garden tours on the DBG website ([www.delawaregardens.org/our-virtual-garden](http://www.delawaregardens.org/our-virtual-garden)), created by Ray Bojarski and Brian Trader, enabled our members and followers to experience DBG through a series of beautiful and informative videos about the Meadow, the Folly, the Knoll and the Rhyne.

**Resilience** – Despite the obstacles presented by **COVID-19**, our dedicated staff and volunteers expanded and enhanced DBG's gardens. Their creative **Resilience** in two of these areas, the Rhyne and the East Woodland Edge Garden, resulted in attracting new Naming Rights donors who contributed over \$300,000 to DBG.

Another new feature created during this past year was the Living Shoreline that is the epitome of **Resilience**. This new feature, created in partnership with the Center for the Inland Bays, creatively demonstrates how to save eroding waterfront areas. The Living Shoreline includes an Observation Deck that our guests will love as they view the scenic Pepper Creek. In addition, this feature is an opportunity for Naming Rights, a wonderful way to support DBG and to celebrate and honor those we love. There is a separate article about Naming Rights opportunities in this Newsletter.

Throughout the year, our fundraising has been overshadowed by the necessary emergency requirements of **COVID-19** and the need to support those organizations on the front line of the pandemic. Nonetheless, through the **Resilience** of our Treasurer, Kathy Johnson, DBG was able to receive support through Federal, State and County emergency loan and grant programs. These funds enabled DBG to weather the significantly reduced revenues due to our postponed and truncated season and our cancelled programs. We were able to pay our hardworking staff without reducing their hours or their compensation.

With our shortened season, we were concerned that DBG's membership might be negatively affected. We needn't have worried. Our most faithful supporters, our Members, responded with an outpouring of new and renewed memberships, and we ended the year with more memberships than we had in 2019, easing the financial burden of our "lost" season.

The tent-poles of DGB's fundraising have been the generous support of philanthropic foundations, which have recognized the educational, preservation and societal benefits of a public garden in Southern Delaware. In 2020, our successful fundraising has included grants from the Longwood Foundation, the Crystal Trust, the Ellice and Rosa McDonald Foundation, the Marmot Foundation, the Stanley Smith Horticultural Trust, and the Crestlea Foundation. These funds have empowered DBG to continue to expand our gardens and to add essential infrastructure, like permanent public restrooms, to enhance the DBG Visitor Experience. Since 2014, DGB's successful fundraising has been guided by our great consultants, Cam and Kathy Yorkston. In this challenging year, their advice and counsel has been exceptionally vital. In the coming years, they will be joined by our newest DBG employee, Craig Sims, who will be coming on board as Director of Development in January 2021. See more about Craig in the Newsletter.

Gardening is a trust in the Future. We plant with the hope of new growth in the coming seasons. Implicit in this hope is expected change. While the garden may be constant, the plants and those who tend to them will change. As we were ending the 2020 season, we were surprised and honored to learn that Brian Trader, our Director of Horticulture and Deputy Executive Director, had accepted a dream job as President and CEO of Lewis Ginter Botanical Gardens in Richmond Virginia. When we hired Brian in 2019, we knew that he was a rising star in the Botanic Garden world. We thank Brian for all his contributions and creativity during his 17 months at DBG.

We wish him continued success and fulfillment in his new position at one of America's leading public gardens. In the meantime, we have added one of Delaware's most respected flora experts, Bill McAvoy, to the DBG Board, and we are advertising for our horticultural vacancy.

We look forward to 2021 when, hopefully, **COVID-19** fades, we can be less dependent on **Virtual** and resume the in-person enjoyment of DBG's beautiful gardens. As a nonprofit, we will always have to be **Resilient**.

**BULLETIN:** As we go to press, we have received word that one of our most supportive foundations, the Crystal Trust, has granted DBG \$350,000 in support of our efforts to make DBG more sustainable, including the all-weather Pennoni Pavilion and permanent public restrooms.

*Ray Sander and Sheryl Swed*

## Challenges and Successes



Docents under tent checking in guests

custom "DBG Face Masks," suggested by Board Member LeDee Wakefield and created with Ray Bojarski's beautiful photographs of the Meadow and Rhyne Gardens in full bloom. Thanks to Ray for this initiative. The custom DBG Face Masks are for sale online by going to [www.delawaregardens.org/dbg-mask](http://www.delawaregardens.org/dbg-mask).

**Open Days** – We opened the gardens in three carefully planned stages to ensure that we had tested our new virus-driven visitor control processes. First, members and Incentive Award Volunteers could make reservations to visit the gardens beginning on July 16. The next stage began July 30, when we allowed members to bring guests. The final stage began on August 16 when we opened to the public. We were open four days a week, Thursday – Sunday from 9 a.m. to 1 p.m. Our small staff and volunteer Docents were on duty each and every open day whatever the weather. These dedicated people welcomed 2,506 guests in 2020. The top admission day was on Saturday, October 25, during DBG's "Free" Sussex Community Appreciation Days when we hosted 240 guests. The feedback was very positive. One of our guests reported in her Five Star Google Review, "These gardens are a local treasure. They are beautiful during any season. The grounds procedures are very safe, and the volunteers are delightful." We closed the shortened but successful

**2020 Challenges & Innovation** – We again counted on our small dedicated staff and our volunteer Garden Stewards and Docents to step up, innovate, and maintain our daily operations in a difficult year. Our team was flexible and adapted to wearing face masks, social distancing and washing hands frequently while carrying out their many tasks. We closed our Welcome Center and operated from outdoor tents the whole year. Everything was done safely without a hitch.

One of the "hot sellers" in our tent shop this year was



Selection of DBG Face Masks

2020 season on November 12. As we said in our closing news release, “We want to thank all our staff, volunteers, members and supporters who have dedicated so much time and energy to make DBG a wonderful experience and a natural respite during this difficult year.”

**Memberships** – We knew that opening the gardens would help stimulate memberships. Our membership coordinator, Angie Phinney, reported in 2020 we registered 388 new and renewed memberships, adding to our operational revenue. We thank all our members for their support.

**Sustaining the Gardens** – DBG is a non-profit, which means we have to work every day to attract financial support from Foundations, businesses, and generous individuals who realize the value of having a public garden in southern Delaware for the benefit of all. Some highlights as we continue to raise funds include:

- **DBG 2020 Year End Appeal** – We are in the holiday season, and in the spirit of giving, we ask you to consider a gift to DBG by going to [www.delawaregardens.org/donate](http://www.delawaregardens.org/donate) or sending a check to Delaware Botanic Gardens P.O. Box 1390 Ocean View, DE 19970. Also, we suggest that you consider a gift of a Garden Membership for someone special. The DBG membership includes unlimited free garden admission for a full year, plant sale previews, discounts at the Gift Shop, and early notice of special events. Go to [www.delawaregardens.org/gift-a-membership](http://www.delawaregardens.org/gift-a-membership) to purchase a gift membership.
- **Virtual Annual Dinner** – Each year, the main DBG fundraiser is the fall annual dinner held onsite under a big tent with 350+ guests. Due to COVID-19, we had to cancel all fundraising and educational events and the onsite annual dinner. But that didn’t stop us. Sheryl, Ray and SoDel teamed-up to create our September 25 Virtual Dinner. SoDel Concepts, led by Scott Kammerer, had perfected the Virtual Dinner Concept. SoDel presented DBG with an amazing 5-Course Tuscan-inspired dinner and a special cocktail. Ted and Kami Banks of Banks Wines & Spirits contributed the Conti Di San Bonifacio wines. The online program included Count Manfredo Di Bonifacio talking about his wines from his vineyard in Tuscany.



We also had live music by DBG “Musician in Residence” Vincent Varrassi. We sold 177 dinners, which our dinner guests picked up at one of three local SoDel restaurants. Thanks in large part to a \$25,000 challenge by Ron Bass and George Robbins, we made over \$100,000. That included \$36,000 from sponsorships. See last page of this newsletter for the thank you to sponsors. We thank all who were involved in this DBG virtual dinner. As a result of our success, other Delaware non-profits have come to DBG asking for advice on setting up virtual dinners for their organizations. DBG has become an innovative non-profit leader with our successful 2020 virtual dinner.

**Grants and Major Gifts** – We have been blessed with both new and continuing generous partners, including:

- **The Ellice and Rosa McDonald Foundation** donated \$250,000 and **Helen and Steven Raleigh of Story Hill Farm** donated \$65,000 for major garden features see details below
- **Longwood Foundation** – Longwood’s grant of \$105,000 provides funding for the new position of Director of Development, which will help DBG raise funds and reach financial sustainability.

- **Crestlea Foundation** – Crestlea donated \$15,000 towards our new gators and mower, which are a great help to our staff and volunteers in maintaining and the Gardens.
- **Marmot Foundation** – Thanks to Marmot Foundation for their \$20,000 donation to build the DBG permanent restrooms.
- **Stanley Smith Horticultural Trust** – The Stanley Smith Horticultural Trust has given DBG an unrestricted \$8,000 grant to support our programs in 2021.

**Naming Opportunities** – One of the ways that organizations and individuals can help the gardens is through “naming rights,” that is, organizations and individuals underwrite and name specific garden features. We are thankful for two recent examples of such support:

**Ellice and Rosa McDonald Foundation, Wilmington, Delaware** – Murray Sawyer, on behalf of the Ellice & Rosa McDonald Foundation announced the award of a \$250,000 Grant to Delaware Botanic Gardens to name the 1.5 - acre Rhyne Garden the “Ellice and Rosa McDonald Foundation Rhyne Garden.” This garden celebrates over 12,000 native plants, 300 native shrubs and 34 ‘Brandywine’ Red Maple trees. The Rhyne Garden is located in the middle of the DBG parking lot. Rhyne is a term used in England for a low-lying drainage area. The Ellice and Rosa McDonald Foundation Rhyne Garden has the environmental function of filtering water that flows off the parking lot. This is the newest DBG Garden, just completed this fall. Ray Sander said, “I thank the Ellice & Rosa McDonald Foundation for their continuing support for the Delaware Botanic Gardens.” Murray Sawyer replied, “Our Foundation is pleased to partner with the Delaware Botanic Gardens to ensure this important public garden continues to provide a natural and beautiful habitat in southern Delaware. In this difficult time, it is more important than before to preserve a natural place where people can enjoy the blessings and be inspired by the natural outdoor setting.”



Ray Sander & Murray Sawyer

**Helen and Steven Raleigh, Story Hill Farm, Frankford, Delaware** – Announced the donation of \$65,000 to underwrite the Story Hill Farm East Woodland Edge Garden. The East Woodland Edge Garden is a vibrant planting of native shrubs, trees, grasses and perennials along the woodland edge that attracts a variety of pollinators. Helen Raleigh said, “We are delighted to partner with Delaware Botanic Gardens and are proud to support our local community as it strives to plant native species that will help restore Delaware’s extraordinary biodiversity.” Sheryl Swed said, “We thank DBG Board Member Scott Thomas, Executive Director of the Southern Delaware Tourism Office and a DBG Board member, for introducing us to the Raleighs.”



Story Hill Farm East Woodland Edge Garden



Living Shoreline Observation Deck

**Living Shoreline Project** – This major project was designed to stop erosion, using natural materials, along 300-feet of the Pepper Creek shoreline and was a collaboration with the Center for the Inland Bays (CIB) and DNREC. DNREC’s generous contribution grant was in large part as a result of the work of Carol Bason, and the idea of the Living Shoreline was sparked by Karen Steenhoult’s master’s thesis at Temple University. Brian Trader and Sam Cashdollar brought the project to life and made it a reality. We also thank the staff and volunteers (both CIB and DBG) for their many hours working under Brian’s supervision to

finish what we hope is just the first phase of this project. As part of the Living Shoreline Project, we now have a new observation deck along the shore to better observe the wildlife near and on the Pepper Creek waters.

DBG is thankful to the following other organizations and individuals who have acquired the naming rights to our garden features.

- Learning Garden sponsored by Dogfish Head Craft Brewery
- Folly Garden sponsored by John and Carol McCloud
- Knoll Garden sponsored by Ron Bass and George Robbins
- Welcome Center sponsored by Ray Sander, Sheryl Swed and the Delaware Community Foundation
- Hoop Houses sponsored by Brent and Malinda Baker and East Coast Garden Center

Opportunities for future Garden naming partners include:

- Piet Oudolf Meadow Garden
- Dune Gardens
- Learning Nest
- Pepper Creek Living Shoreline and Observation Deck
- The Point at Pepper Creek
- West Woodland Edge Garden
- The Gallery Garden

To see details of these exciting naming opportunities, go to [www.delawaregardens.org/naming-opportunities](http://www.delawaregardens.org/naming-opportunities). If any individual, organization or foundation is interested in sponsoring a garden, please contact Sheryl Swed, DBG Executive Director, at 202-262-9856 or email [sheryswed@delawaregardens.org](mailto:sheryswed@delawaregardens.org).

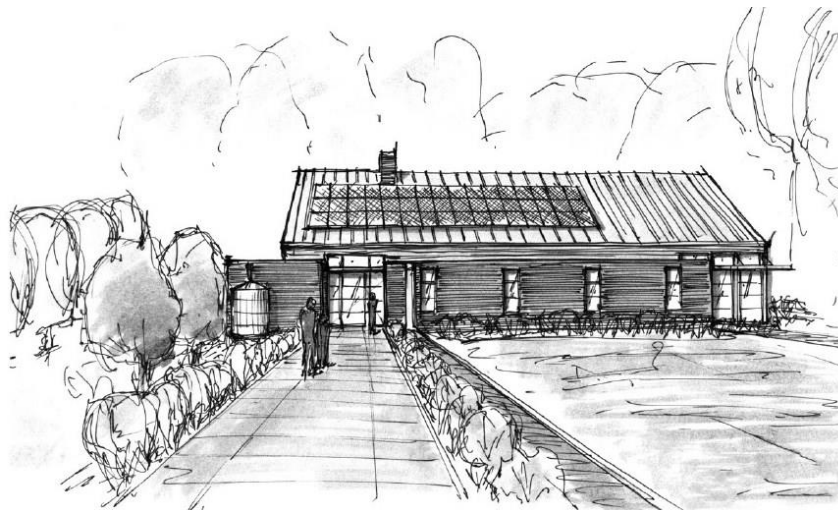
## Facilities Update

**Permanent Restrooms** – The final restroom design plans are approved, and we are ready to proceed with building the restrooms. Thanks to Scott Edmonston, SEA Studio Architects, and Mark Davidson at Pennoni for moving this process along. We look forward to building the 1,175 square foot restrooms, which have several environmentally friendly “green” features. WN Builders, owned by Wanderson Nogueira, won the contract. The restrooms will be located in the west woodlands just south of the Welcome Center and near the new west woodlands trail. We plan to drill a new well to provide the restrooms and the future Annette Pennoni Meadow Pavilion with potable water.



Delaware Botanic Gardens Public Restroom Entry Perspective

**Annette Pennoni Meadow Pavilion** – Working with Chuck Pennoni, we recently sent a letter to a special list of potential contributors to building the pavilion. So far we have received about \$177,000 in donations. Our goal with your help is \$650,000. If you are interested in this project, which will give DBG its first all-weather facility, please email Ray Sander at [raymondjsander@gmail.com](mailto:raymondjsander@gmail.com). You can also send your check to Delaware Botanic Gardens, P.O. Box 1390, Ocean View, DE 19970. The pavilion will be located just north of the Welcome Center, where we had the big tent for last year’s annual dinner. It will face the Piet Oudolf Meadow Garden and provide indoor space for DBG.



Annette Pennoni Meadow Pavilion Front Entrance Perspective

## Passages

### Like the seasons, DBG moves forward

#### William A. “Bill” McAvoy to Board of Directors

On November 20, DBG announced that William A. McAvoy has joined the DBG Board of Directors. DBG President Ray Sander stated, “We are honored that Bill has agreed to serve on our Board and that this public garden continues to attract people with his knowledge, experience and enthusiasm.” DBG Executive Director Sheryl Swed said, “Bill has been involved with DBG since 2014, when he participated in a key decision to revise our original site plan that led to our current, visitor-friendly site. Bill also inventoried the plants and trees in our 12-acre Woodland Gardens, helped site the placement of our Outdoor Living Classroom, and inspired the re-creation of the Inland Dunes. Now, as a DBG Board Member, he will help DBG protect and preserve this public garden and advise our staff and volunteers.”



Bill McAvoy

McAvoy, a native Delawarean, received his Bachelor of Science degree in Biology, with an emphasis on Botany and Vegetation Management, from Delaware State University. Bill brings 30 years of experience studying the flora of Delaware and the Delmarva Peninsula, and he has been a leader in documenting the flora of Delaware with a focus on rare plant species. Through the years, he has written many professional articles on the plant life and habitats of Delaware and the Delmarva Peninsula.

McAvoy said, “I am pleased to join the DBG Team. I walked this 37-acre site when it was more a field of dreams, than a Garden reality. Actually, it was a field of weeds and a forest full of greenbrier! I am so impressed with how far the garden has progressed since that time. What makes Delaware Botanic Gardens so special are three things: the preservation and promotion of native plants, that it was built with a very small staff and an army of dedicated volunteers, and they had top professional garden designs by Piet Oudolf, the well-known Dutch plantsman. Delaware Botanic Gardens is a major treasure for Delaware and Sussex County.”

#### Craig Sims – Director of Development

In January, Craig Sims will join the Delaware Botanical Gardens staff as the Director of Development. This new staff position at DBG is made possible by a generous grant from the Longwood Foundation. Craig most recently served as the Assistant Scout Executive / Chief Operating Officer at Chester County Council of the Boy Scouts of America. He was on the leadership team involved in a \$4 million annual fundraising campaign. Craig developed strategies that led the council out of a 10-year membership decline. Ray Sander said, “We welcome Craig to the DBG Family. He understands the nonprofit world, which depends on a disciplined strategy of active outreach to foundations, businesses, civic and community organizations. Craig understands philanthropy's value, especially working with individuals who give their time and talent to grow organizations.”





Craig Sims

"I am excited to join the DBG Leadership Team," Craig said, "I look forward to building on the amazing environment that the passionate volunteers and dedicated staff have created at the Delaware Botanic Gardens. Without hard-working volunteers giving generously of their time, talent, and treasure, none of these projects would have been possible. Walking the grounds affirms how fortunate we are to have access to open spaces like the Delaware Botanic Gardens. I'm thrilled and humbled by the opportunity to be part of the exciting Delmarva shore community."

Sheryl Swed, Executive Director of Delaware Botanic Gardens, said, "Craig is full of energy and brings a unique blend of expertise in fundraising, client relations, and program development. He also has been active in protecting the environment and educating community youth on the value of outdoor environments by serving on the Education Board at the Stroud Water Research Center. We look

forward to putting his fundraising, love of nature, and program development experience to work."

## DBG Master Naturalist Program

Sheryl Swed announced that DBG has become a local partner in Delaware's Master Naturalist Program. This program is a science--based natural resource training program jointly coordinated by the University of Delaware Cooperative Extension and the Delaware Nature Society. Upon completion of initial training, Master Naturalists will give back to Delaware's natural world with volunteer services to include education and outreach, service projects, and citizen science. Please go to [www.udel.edu/master-naturalist](http://www.udel.edu/master-naturalist) for Master Naturalist Program details. The types of projects DBG Master Naturalist volunteers may work on include:

- **Citizen Science** – Grassland and Woodland Bird Surveys, Reptile and Amphibian Surveys, Pepper Creek Water Quality Surveys, Native Plant Surveys and Monitoring, Tree Measuring Surveys.
- **Stewardship** – Garden Steward Program, Woodlands Walkways Maintenance, Living Shoreline Surveys & Maintenance.
- **Environmental Education & Outreach** – Docent Program, Nature Photography, Nature Tour Guides.
- **Special Projects** – Specific Garden Surveys and Renovation Projects in developing gardens.

DBG is recruiting volunteers now to participate in the Master Naturalist Program, which initially will be limited to six people. We anticipate the program will begin in January so, please sign up now with DBG Board Member Bill McAvoy by sending an email to [william.mcavoy@delawaregardens.org](mailto:william.mcavoy@delawaregardens.org) or calling Bill at 302-492-3541.

If you are interested in joining the program, go to the following link to fill out the application online: [Delaware Master Naturalist Volunteer Application](#).

# Volunteer Update

News from Carol McCloud, DBG Vice President & Volunteer Director

“The heart of a volunteer is not measured in size, but by the depth of the commitment to make a difference in the lives of others.” - *DeAnn Hollis*

We've achieved a lot this fall. Our staff & Garden Stewards worked diligently planting, weeding, maintaining and curating the Gardens. We weeded all our gardens, set up and repotted plants in our Hoop House and added plants throughout the Gardens, planted 34 “Brandywine” red maples and over 300 native shrubs in October in our new Rhyne Garden as well as completing our Living Shore Line Project and constructing our new deck along the Pepper Creek.

During our short 4 months of being open, our Docents greeted our guests with smiles, enthusiasm and knowledge. We were pleased that we could bring such beauty and joy into the lives of our guests during this time of challenges. Many of our guests stated “Being in the Gardens brings a feeling of wellbeing. Coming to the Gardens and experiencing the fresh air and slowing down has been a great experience.”

We also achieved the successful implementation of our new Volunteer software. Our Volunteers can now sign up on the database to volunteer as well as enter their volunteer hours. This process is a more efficient way of entering and gathering data for reporting. Thank you Alison Willocks for volunteering to share your knowledge and expertise in the implementation. All our volunteers (Garden Stewards, Docents and Administrative) have a never-ending dedication, passion and love for the Gardens. I'd like to thank all our volunteers for all you do for DBG. It is an honor and a privilege to volunteer alongside you. You are greatly appreciated.



Carol McCloud



Jane Peters, Tricia Precht, Rob Wisniewski, Alison Willocks and Elizabeth Rives

We continue to follow the guidance provided by Governor Carney relating to the Coronavirus pandemic. The safety and health of our guests and team (Staff, Volunteers, and Board) continue to be our highest priority. Our Volunteer days for fall were Monday through Wednesday from 9:00am to 1:00pm. Starting in December, our Volunteer days will be Tuesday and Wednesday from 9:00am to 1:00pm, weather permitting. We've had many new volunteers sign up, even during the pandemic.

If you would like to become a volunteer at the Delaware Botanic Gardens, please go to our website at [www.delawaregardens.org/volunteer-to-help](http://www.delawaregardens.org/volunteer-to-help) to sign up. We would love to have you join our amazing team and become a part of the Delaware Botanic Gardens.

On behalf of our Volunteers I'd like to thank all our guests who came to see the Gardens and were able to experience their beauty.

**Tours** – Unfortunately, due to COVID-19 we were not able to offer our large guided tours in the Gardens. However, we did offer small tours (10 guests) each day at 10:00 am when we were open. Brian Trader, Elizabeth Rives and I shared the tour guide duties. They were a great success with our guests. We will give an update on our website [delawaregardens.org](http://delawaregardens.org) when we are able to resume our larger tours. If you would like to contact me for a future tour, I can be reached at [carol.mccloud@delawaregardens.org](mailto:carol.mccloud@delawaregardens.org).

## Horticultural Happenings

### News from Brian Trader, Deputy Executive Director and Director of Horticulture



Brian Trader

For the theme of my last column, I would like to focus on new pathways. Throughout the year, we envisioned, designed and created new pathways and trails through our evolving gardens. We expanded our guest experience through the entire Woodland Gardens and guests raved about the new views and especially loved the fern glades. The functional and beautiful Rhyne Garden was created for guests to enjoy as they walk to the gardens from their cars. With the planting of 34 'Brandywine' red maples and over 300 native shrubs in October, the fall colors welcomed our last guests of the season along their path. The Living Shoreline Project and construction of a new platform along the shore, offer spectacular views of Pepper Creek. This will be a key destination in the gardens supporting our educational mission. These pathways offer new experiences and provide opportunity for new encounters with plants

and nature. None of this year's progress would have been possible without our exceptional team. Sam Cashdollar's creative engineering and Jeremy Cole's work ethic and vision combined with our passionate force of volunteers to achieve greatness during a very challenging time. We worked together as a community, to build something for the community, and helped one another grow in the process.



Sam Cashdollar, Jeremy Cole and Brian Trader

As we move into the winter months, we are already planning new paths for our gardens and contemplating how our guests may enjoy our natural beauty. We are excited to build a new bridge to connect our Woodland Garden pathways. The bridge, made possible by our generous volunteers and the wonderful skill of our team, will be beautiful and feature new plantings. We will create a new pathway between the Woodland Gardens and the Eastern Woodland Edge (recently named by Helen and Steve Raleigh of Story Hill Farm). Both of these new features will offer our guests new perspectives and introduce them to new areas of our garden.

As these new paths are implemented at DBG, I will be starting my own path with a new organization. I am humbled to have contributed to the evolution of Delaware Botanic Gardens and will forever love the spirit of this very special place. We opened the garden gates and successfully welcomed guests during an unprecedented pandemic. I hope you share in my pride of our mutual accomplishment. The passion and dedication of our volunteers will always be an inspiration to me. I am thankful for your warmth, trust and friendship. As we forge new pathways, we never forget those special plants and people that we encountered along the way. I look forward to seeing the continued progress of DBG and staying connected with all of my DBG family.



The Meadow Garden's Fifth Season

**All photographs by Ray Bojarski, Brian Trader and Brent Baker**



# DELAWARE BOTANIC GARDENS

## *Virtual Dinner Party*

DBG raised over **\$100,000** due to the generosity of **SoDel Concepts, Banks Wine & Spirits**, our Sponsors, our dinner guests and our Challenge Match Donors. We could not have done it without their support.

### PRESENTING SPONSORS

#### BLUE LUPINE

Ted & Monica Banks  
Ron Bass & George Robbins  
Mark & Katherine Davidson  
Dogfish Head Brewery  
Kami Banks Kane & Sean Kane  
Edward V. A. Kussy  
Carla & Jack Markell  
Pennoni  
Sheryl J. Swed & Raymond J. Sander  
SEA Studio Architects  
Story Hill Farm  
Sussex County Council  
Sussex County Land Trust  
Taylor & Messick, Inc.  
Yorkston Consulting

#### GENTIAN SPONSORS

Tish Brey Photography  
Coastal Point  
Brent & Malinda Baker  
Carol & Tom Bason  
Carol McCloud  
George & Lynch  
Nickle Electrical Companies  
Vincent & Paula Varrassi  
Bonnie & Charlie Zonko

### SUNFLOWER SPONSORS

Baird Mandalas Brockstedt LLC  
Bancroft Construction  
Peter E. Carter  
Ray Bojarski & Diann Corsnitz  
Coastal Plant Care  
Coastal Tented Events  
Delaware Beach Life  
Delaware Electric Cooperative  
Gateway Garden Center  
Good Earth Market & Organic Farm  
Hoffman Nursery  
Kathy Johnson  
Lazy K Nursery, Inc.  
David Swayze & Carolyn DePew Swayze  
TreeButtress  
LeDee & David Wakefield

### BIRD'S FOOT VIOLET SPONSORS

Harry Avila & Diane Olson  
Bank of Delmarva  
Margaret & Larry Brain  
Cape Gazette  
Sam & Cyndi Cashdollar  
Jeremy Cole  
Coventry Corporate Printing  
Dagsboro Days  
Dagsboro Paint & Wallpaper  
Judy & Fred Dayhoff  
Phil Dell'Orco & Karen Steenhoudt  
Angela & Mike Phinney  
Jan & Robert Poli  
Michael Riska & Angie Dunson  
Joanne & Michael Shipley  
Brian Trader & Tyler Monteith  
Alison Willocks & Elizabeth Rives

### UPCOMING EVENTS

**Free Sussex County  
Community  
Appreciation Days**  
Saturday, October 24 and  
Sunday, October 25  
9 am to 1 pm with timed  
reservations

**Opening for Birders  
and Photographers**  
Friday, October 23,  
7:30 am with admission  
and timed reservations

**Tours** for not more than  
10 people at 10 am  
Thursday through Sunday  
with timed reservations.  
Members \$10 non-  
members \$22 (includes  
tour and admission)

